



Workplace Learning



webanywhere.com

Promatum

Increase The Effectiveness Of Your Content Marketing

From making a video interactive, to creating hotspots within a PDF, Promatum is simple and captivating for all users. Traditional corporate learning systems are often difficult to navigate and lack the ability to create engaging courses. Promatum features a rapid content authoring tool that makes it easy for just about anyone to create interactive modules.

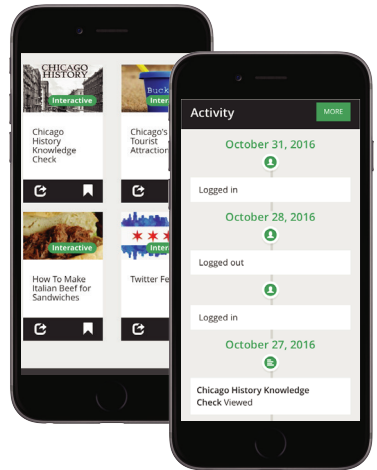
Microlearning

In a day and age where distractions are always an arm's reach away, microlearning is more important and relevant than ever. Microlearning is a small and informal self-directed learning experience. Learners often want interactive environments to keep them engaged and help them retain information.

The question is: What materials are out there to help develop such an experience? The answer is: Promatum.

Interactive & Engaging

Sure your learners are taking the courses, but are they actually engaged and retaining the information? Promatum offers interactive features that keep learners intrigued throughout every module. With pop-up questions during videos, to PDFs with hotspots of information, there is no limit to how engaging your content can become.



Mobile Learning

With most people using smartphones, the way people access information has shifted to the mobile phone. Like all of our products, Promatum is mobile first meaning your users can learn on the go when convenient for them. The estimated mLearning global revenue is expected to reach \$12.2 Billion by 2017. If you're not delivering mobile learning, you're thinking about it. And you are delivering mobile learning, you're thinking about how to do it better. With Promatum's ability to rapidly author interactive content, your learners can access engaging content on the go!

Reporting

As educators, we want to know who's really embracing our content, so reporting is key. Promatum offers unique reporting features that let you understand your users' activity when accessing the site. The dashboard feature allows users to see their activity history upon logging in. Our reporting tools within Promatum really provide a magnifying glass into your users learning journey.

Easy Implementation

Promatum is designed with simplicity in mind, and that includes implementation. We get your interactive learning solution up and running quickly, so you can focus on educating your learners. Unlike most Learning Management Systems, Promatum can be setup in no time.

Learning Management System (LMS)

A Learning Management System is an Integral Part of Any eLearning Program

Webanywhere have been providing learning management systems (LMSs) for over 10 years now, to companies and organizations around the world. Our dedicated eLearning experts work with you to determine the platform which will best fit your needs, then help to provide a service tailored to your organization.

We offer a range of LMSs designed to suit any organization or budget, based on open-source technology for maximum stability and security.



Totara

Totara is a popular LMS extended from Moodle, giving you all the core features and stability of the former. Where it excels, however, is in its additional features created specifically for the business sector, including advanced reporting, hierarchies and analytics, as well as potential integrations with a huge range of other software.

As a Platinum partner, we're able to provide Totara services including hosting, theming and deployment at the highest levels available.



Moodle

The world's most popular open-source LMS is available through Webanywhere as an official Moodle partner in the USA, UK and Poland. We can provide unrivalled support and services for the platform, including theming, plugin development, content creation and more. All Moodle partners are carefully chosen and vetted by Moodle themselves, in order to ensure the highest standards of quality.

Moodle can be a great option for those looking for a powerful platform that doesn't break the bank - with no ongoing license fees, Moodle can prove very wallet-friendly.



Training & Support

Courses and Resources to Help you Implement Effective eLearning Strategies in your Organization

Whether you have an LMS through Webanywhere or not, as Moodle and Totara partners we're able to provide support, training and more on these platforms.

We offer a mix of online training sessions and on-site face-to-face visits, (either one-to-one or classroom based) and can deliver a custom program to match your requirements. In addition, we provide a wealth of takeaway content including documentation and video resources to support learners as they master the system.



Totara Training

Even if you're already familiar with Moodle, getting to grips with the advanced features available in Totara can be difficult at first. This course will cover how to use features such as tracking, user management and advanced integrations.



Moodle Training

If you're a new administrator of a Moodle, and you're not familiar with the software it can look a little daunting. Although it's easy to pick up, it can help to have some direction so you're clear on what settings and areas are vital for a Moodle administrator.



Articulate for Instructional Design

Our course covers the basics of the Articulate Studio, focussing on using this to create eLearning materials.



Bespoke Content Development

Our custom eLearning services gives you the exactly what you need whilst fitting the audience's needs.

Instructional Design

This course focuses on how eLearning material is created and developed. Guidelines regarding best practices are discussed in order to create truly engaging and effective eLearning courses.

Services

We Offer a Full Range of Both Tailor-Made and Off-The-Shelf eLearning Support

Having worked with organizations ranging from Fortune 500 companies through to local community schools, we've built up years of experience in eLearning consultancy. Our talented experts will work with you to determine the best course of action for the platform you need.



Extended Enterprise Services

Whether through our Promatum platform or a more tailored system, we can help take eLearning outside of your office and into your wider network.



Sales Training

eLearning tools can provide training at anytime, from anywhere for your salesforce through cost-effective, open-source eLearning platforms.



Selling eLearning

We create and develop web-based solutions for some of the world's largest organizations, providing MOOC platforms allowing them to train staff & partners, turning their training into a revenue stream.



Health and Safety

With clients including major hospitals, medical device companies and the British Safety Council, we rightly consider ourselves experts in the rapidly changing healthcare market.



Compliance Training

We help you set up an LMS to manage compliance in your organization, allowing you to save time and reduce costs by automating the process.



Onboarding

We can help you to use an LMS to help your organization implement an efficient onboarding process for new hires, reducing time-to-competence and saving money.



Customer Service

Transform customer service training by allowing your staff rapid access to learning materials through an LMS.



Management & Leadership

Train both leaders and managers within your organisation in a flexible and user-centred way, using eLearning.

Custom eLearning

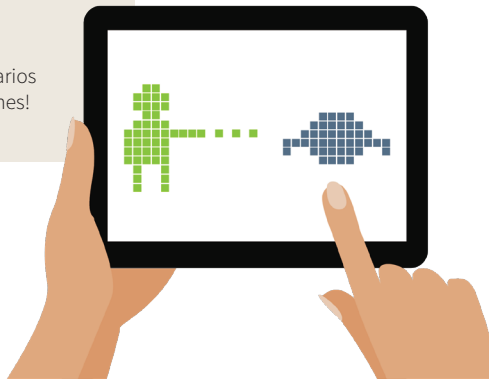
Our custom eLearning services gives you the exactly what you need whilst fitting the audience's needs.

With over 13 years in education and over 5,000 client champions, we understand what works best for your learners. Focusing on the learning design at the core of our design principles.

Our Approach

Our design and delivery model is based on the following core principles:

- Learner centered
- Goal or performed based
- Telling stories
- Giving the audience real life scenarios
- Making learning fun - we love games!



Where we can help?

We have a wealth of experience in learning design, globally. This started with our foundation as a business working with the education sector, the millennials which are now part of today's workforce.

We have experience in eLearning content design in the following areas:

- Product and sales training
- Compliance
- Onboarding
- Customer services
- Knowledge acquisition
- Systems training
- Leadership Development

Mobile Apps

All Access Training Whether You're Online or Off

As a Totara and Moodle Platinum Partner, we play a key role in developing the platform and mobile apps and providing a fully comprehensive solution. Introducing the revolutionary mobile learning apps that allow training to be accessible anywhere, at anytime. The LMS mobile learning apps for Moodle and Totara LMS allow you to continue your training via your own device - even when there's no wifi available.

Moodle And Totara LMS Apps

- Access your learning catalogue and enrol into course while on the move.
- Complete training tasks including assignments and quizzes directly via the app.
- Log into Totara LMS or Moodle on multiple devices.
- Both the Moodle and Totara LMS Mobile Apps can be fully customized to your brand and specification.

How Mobile Learning Can Benefit Training Onboarding

- Induction training at their fingertips.
- Accelerate productivity with easy-to-use training modules via the app.
- Interactive quizzes to enhance knowledge retention.

Compliance

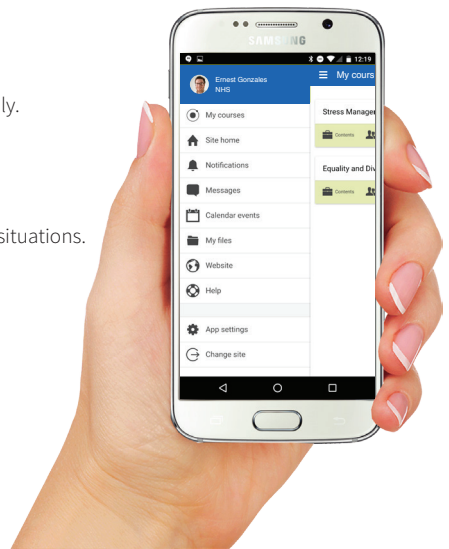
- Compulsory modules can be made fun and engaging via mobile learning apps.
- Quizzes and surveys completed on the move.
- M-learning design increases engagement with compliance courses.

Product Knowledge/Sales Training

- Effective training on the job is made possible.
- Glossaries available at your fingertips.
- Forums to discuss and ask questions, quickly and easily.

Skills Development

- Learning material can be accessed easily.
- Customer service best practice.
- Campaign training instantly accessible for on-the-job situations.



Bespoke Content Development

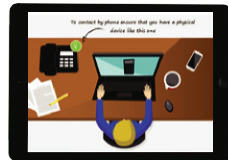
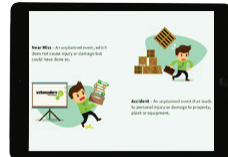
Our custom eLearning services gives you exactly what you need whilst fitting the audience's needs.

With over 13 years in education and over 5,000 client champions, we understand what works best for your learners by focusing on the learning design principles.

Our Approach

Our design model is based on the following core principles:

- Make the training learner-centric
- Base it on goals or performance
- Tell a story that is compelling and relevant
- Give the learner real-life scenarios
- Make learning fun and gamify!
-

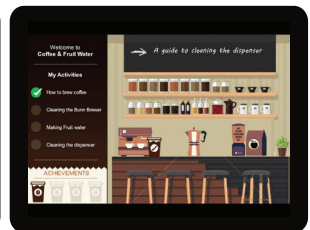


Where we can help?

We have a wealth of experience in learning design, globally. This started with our foundation as a business working with the education sector.

We offer:

- Interactions and quizzes
- Video and audio
- Real world scenarios/narratives to keep the learner engaged
- Custom graphic design and animation



We have experience in eLearning content design in the following areas:



Product & Sales Training

Use interactive training to enable better product knowledge, sales and performance. Engaging eLearning can allow your staff to interact with new products. Consider using leaderboards and gamification elements to promote healthy competition with your staff for improved results.



Customer Service

Improve your customer service training by using interactive, real-life scenarios to train your staff, allowing them to explore multiple responses through branching scenarios.



Compliance

Whether it's for health and safety or administrative training, using engaging content can remove the need for gathering everyone in a room with a trainer. Allowing users to learn in their own time and track their progress can significantly reduce the costs associated with compliance training.



Management & Leadership

Create great leaders with a wide range of content solutions. We offer flexible and mobile learning that is accessible when managers require training for a specific need such as performance management reviews. Immersive, scenario-based content can improve decision making and leadership skills.



Onboarding

Make your new employees feel welcome and informed from day one with engaging eLearning. Allow them to learn at their own pace from their phone or tablet both motivates and empowers.



Systems Training

Allow your learners to explore new systems through interactive videos and software emulations. Step-by-step and how-to videos are proven to increase learners' retention of processes.

University College London Hospital National Healthcare Service



UCLH: A multi-functioning learning platform for up to 10,000 hospital staff

This case study examines how eLearning and LMS specialists Webanywhere delivered an easy-to-use, multi-functional healthcare learning platform for UCLH - University College London Hospitals.

UCLH are now able to deliver high quality online training to their workforce, using an online healthcare training platform that is engaging, easy to use and available anywhere, anytime.

What UCLH Needed

University College London Hospitals NHS Foundation Trust wanted an eLearning platform that was easy to use, accessible from anywhere, and that allowed them to provide high quality online training and education to employees. It needed to provide support, education and training for trainee junior doctors and nurses, as well as all other existing staff. This meant a system that could cope with 10,000 users, from varying nationalities, and with varying levels of IT skills. They also wanted to import all of their completion records (around 100,000) into their new system.

The existing system at UCLH had been in use for two years but, according to Claire London, Head of Workforce Development, it wasn't suitable.

Our Solution

Webanywhere created a custom Totara LMS for hospitals within UCLH, which was developed to provide training for new junior doctors and nurses. This enables them to complete training online when required. Configuration of audience management and hierarchy setup was also provided, creating a platform that was ready to use by staff. Furthermore, as the LMS is cloud hosted it can be accessed anywhere and provide collaboration between employees. This in itself makes a huge difference, as previously, staff could only access their CMS internally.

As Totara is an open source platform - it's a custom distribution of Moodle, the world's most popular learning management platform, for the corporate sector - which means that improvements to the system are continually being developed. In addition, it means that costs are lower, however the quality is not compromised.

Content can also be uploaded quickly and easily. "We have our own education tech team who deliver high quality content," says Claire.

“We have been able to create high *quality* content with our internal experts. The learning content was developed by our staff, for our staff. This quality couldn't have been purchased off the shelf.”
Claire London, UCLH

To ensure the system was up and running from the start, Webanywhere provided a day of onsite training. Since then Webanywhere have continued support with phone calls and online sessions, to aid UCLH during their setup.

Initially the pilot was launched with a cohort of junior doctors within the Trust. Prior to joining the Trust, these doctors were given access to the platform to complete their training. Staff were continuously asking when they could access the system - and after the pilot period was a success, this has now happened.

As part of the UCLH onboarding process, new recruits can now access mandatory training before joining. This ensures staff are safe and ready to be effective as soon as they join the Trust. A by-product of this is improvement in the induction process at UCLH.

UCLH can now deliver high quality online training and education to their healthcare staff and trainees, using a learning platform that is engaging, easy to use and available from anywhere.

“We value excellent education very highly, so we wanted to provide our staff with the best *user experience*. Webanywhere were able to provide this *easily* and *quickly*, and could make it look and feel how we wanted.”
GillMcCallister, UCLH

Key Benefits

- Cloud based hosting providing: secure and reliable resources, whilst being highly scalable, environmentally friendly, and creating increased collaboration.
- Easy implementation and delivery - the learning management system was easy to deliver and easy to implement.
- Provides a personalised learning experience, which creates a more engaging and relevant platform for each individual learner.
- Able to see which learners have completed their training, ensuring compliance.
- Staff can complete training anywhere, anytime.



Domino's Pizza



Learning Management System - Domino's Pizza

This case study examines how eLearning specialists Webanywhere delivered a new learning management system to Domino's Pizza Group. The new platform, DOTS, helps deliver personalized content and training material to Domino's employees.

About

Domino's Pizza Group plc is the leading player in the fast-growing pizza delivery market and holds the exclusive master franchise to own, operate and franchise Domino's Pizza stores in the UK, Republic of Ireland, Germany, Switzerland, Liechtenstein and Luxembourg. As of 30th December 2012, there were 805 stores in the UK, Republic of Ireland, Germany and Switzerland.

Founded in 1960, Domino's Pizza is one of the world's leading pizza delivery brands. Through its primarily franchised system, Domino's Pizza operates a global network of more than 10,000 Domino's Pizza stores in 73 international markets. Domino's Pizza has a singular focus – the home delivery of pizza, freshly made to order with high quality ingredients.

Domino's believe that:

“Through *world-class* training programs, competitive pay rates and great incentives, we encourage our people to develop their talents and release their potential.”

With any business training is key. However with a company of this size, it is imperative that all members of staff have the same opportunity to access training materials. The Domino's Pizza Group is a growing organization looking to expand its UK eLearning base considerably, which will support staff in development and learning.

Key Benefits

- 'DOTS' is a flexible learning portal which enables the Domino's team to enhance their knowledge as part of a global community
- As the 'DOTS' Moodle grows organically, eLearning authoring tools that allow Domino's to create its own content have led to significant cost savings
- The 'DOTS' platform has created a better way to access learning material quickly whilst in a fast paced environment
- The platform is bespoke in design, and easy to navigate
- It provides a personalised learning experience, which creates a more engaging and relevant platform for each individual learner
- Secure login to a 'community hub' member area for knowledge sharing and social networking
- As compliance (e.g. Food Hygiene and Health & Safety) is key, the platform records and tracks those who have completed the training required of them, and makes this information easily accessible for management planning.



Webanywhere Solution

Webanywhere created a custom Moodle (2.0) LMS, that was developed for easy navigational use. As a Moodle is a very versatile platform, it allowed Webanywhere to create a custom theme, which renders 'Just-In-Time' (JIT) for its users.

The site itself can be accessed very easily by Domino's employees through the Electronic Point of Sale (EPOS system) which can be found in all stores. As employees need their own account details to login to the platform, it creates a learning space that is specialised to each individual and their needs. Furthermore as Moodle is an open source platform, there are no licence fees, which in turn keeps cost low, fulfilling another of Domino's requirements.

Requirements

When looking for an appropriate learning management system (LMS) Domino's had several key requirements which needed to be addressed. First and foremost they wanted a robust, scaleable learning platform available to a large group of users. This is so employees from around the country can access the same learning materials via a single point of access. Due to Domino's wide dispersion of outlets throughout the UK it would be difficult to control individual stores own training systems. Therefore a singular platform that was accessible anytime, anywhere, would be ideal for the training needs of the organization. With such a wide range of roles and such a vast employee base, Domino's also wanted a platform that would allow them to create easy navigation to relevant content for users across the organization.

Furthermore, as the Domino's brand is intrinsic to the identity of the company, they wanted to reflect this throughout the LMS. This custom design would need to be congruent with Domino's existing branding, to make users feel familiar with the platform, increasing the likelihood of return. Finally Domino's wanted a learning management system that could be deployed rapidly, whilst achieving a high level of return at a relatively low cost. This platform would become known as 'DOTS'.

JetBlue Airways



A Totara learning platform to improve student experience and scale the administrative oversight of JetBlue Scholars.

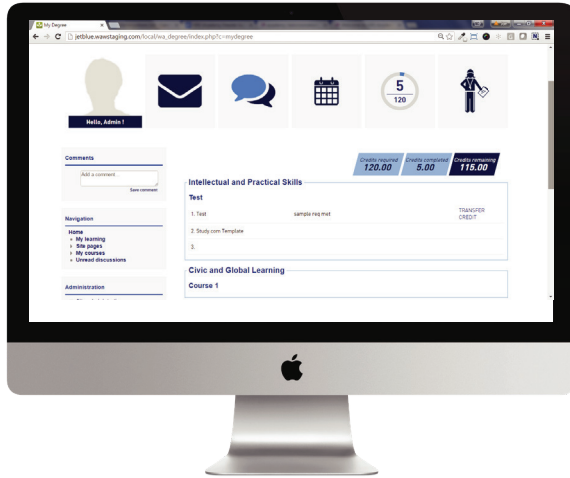
This success story examines how elearning experts at Webanywhere were able to merge effective core Totara functionality with custom developments for the 5th largest domestic air carrier in the United States.

JetBlue Airways strive to inspire humanity by serving their customers, crew members, and the community. The company founded JetBlue Scholars, an innovative degree completion program designed to help their crew members earn a Bachelor's degree and inspire other corporations to do the same.

JetBlue have organically built a degree completion program, which utilizes alternative credit pathways to reduce the cost of a college degree. Their biggest challenge was that such a program has never existed before, so the systems to manage the program were not available. Webanywhere provided an LMS solution enabling JetBlue to improve the student experience, all while scaling the administrative oversight of the program.

Key Benefits

- A scalable, open-source platform.
- Custom-build system capabilities.
- Easy to use interface allows users to get the most out of the system.
- Increased efficiency due to increased scalability.



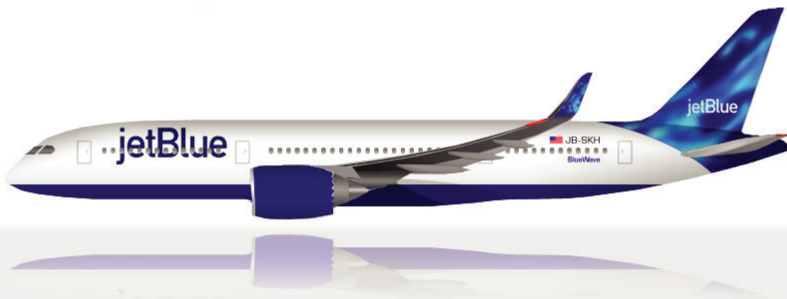
“

Webanywhere consistently finds creative solutions to development needs as they arise. When changes in scope are necessary, they minimize the impact to the project budget and timeline by effectively merging core Totara functionality with custom developments.

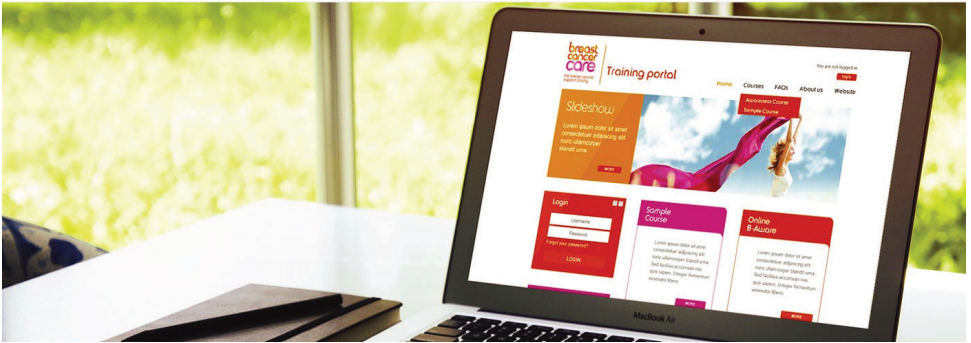
We're considering using Webanywhere to install another Totara system to be used on the corporate learning side.

Cody Cleverly, Senior Analyst, Academic Programs

”



Breast Cancer Care



A Moodle platform to train volunteers and health professionals in Scotland

This case study examines how elearning specialists at Webanywhere were able to use rapid eLearning techniques to create and digitise content for a large charity.

BCC can now provide enhanced support and training to their large network of professionals and volunteers dedicated to breast cancer care. Breast Cancer Care provides free support and information for people facing breast cancer. They have offices in Scotland, England and Wales.

The charity launched their B-Aware campaign in March 2014, which aims at promoting early detection of breast cancer and improving survival rates in Scotland through the creation of a team of trained volunteers who will reach out to local communities.

Breast Cancer Care worked with Webanywhere to create an online 2-hour pilot course to be given to 50 volunteers and health professionals. Webanywhere developed a Moodle platform and a course using SCORM content, including quizzes and custom certificates. The training portal, which hosts the B-Aware online course, also has information about face-to-face training and FAQs.

Key Benefits of the Solution

- A scalable, open-source platform.
- Increased promotion of breast health awareness.
- Raised the profile of the charity.
- Started developing a comprehensive elearning program.
- Provision of an eLearning platform used across the organisation for a variety of training needs.
- Confirmed user interest in eLearning

“ We are really excited to have developed such an *innovative* eLearning project with Webanywhere and have had a really positive response since it launched. The B-aware online course will help us train even more healthcare professionals to work with local communities where early detection of breast cancer is low.

Davinia Green, Head of Breast Awareness and Early Detection
at Breast Cancer Care



Clas Ohlson



Workplace Training Excellence with Totara LMS

Clas Ohlson is a Swedish retail business with 205 stores in 5 countries and it is one of the biggest of its type in Scandinavia. The company is constantly expanding through new offerings, new stores and by establishing operations in new markets. The Clas Ohlson brand is associated with offering a wide range of affordable products in five product areas: hardware, electrical, home, multimedia and leisure. The business focuses on providing proactive, knowledgeable and accessible customer service, and an inspirational shopping experience through all sales channels.

Key Facts

205 stores in 5 countries | 4,700 employees | 7.5 Billion SEK (£610 million) annual turnover | 76 million visitors | 38 million customers | High focus on sustainability agenda | One of the strongest retail brands in the Nordics.

The Challenge

To deliver high-quality, scalable learning platform that would ensure high-performance and a long-term sustainability through continuous education across the company.

Clas Ohlson places great importance on how it trains and develops its employees and it is one of the six long-term strategic aims of Clas Ohlson. However, the company has been using a proprietary LMS that was not fit for purpose which limited the training provided to the workforce. Therefore, they needed a solution that would meet the needs of the business.

“

*Developing and Implementing the Totara LMS solution to our specific needs went **fluently** and the project was a great success.*

Peter Sinko, Head of Talent Management at Clas Ohlson”

Our Solution

Totara LMS has been selected as the best platform to meet the learning needs of Clas Ohlson. As Totara Platinum Partner, Webanywhere offered Clas Ohlson the full range of Totara services to help the company meet its objectives.

Totara LMS is a leading open-source LMS developed for corporate eLearning and it is used by a variety of organizations from large blue chip companies to small SME and the third sector. Totara LMS is sector independent, used by a disparate group of industries including retail, government, not-for-profit & charity, financial services, energy and health. Some large retail businesses that are using Totara LMS include: Tesco, GNC and Samsung.



After considering a set of requirements provided by Clas Ohlson, Webanywhere developed a Totara LMS that helped to achieve the following outcomes:

- Delivered a Totara LMS in UK and Finland with a view to expand into other countries.
- The platform is now scalable which means that it has the ability to handle a growing amount of training content in an efficient manner.
- LMS is accessible in different languages and with localised course content. Therefore, it enables Clas Ohlson to implement international growth plans.
- The learning platform is now expanding to further countries, including Norway, Sweden, China and Germany.
- The LMS is hosted in the cloud which gives a lot of freedom and flexibility in terms of the learning content and accessibility.
- Using Totara LMS, Clas Ohlson are now benefiting from new features which have been developed in the community. For instance, reporting and quick access dashboards for team leaders, regional managers and executives are in place.
- Custom time reporting plugin has been implemented to meet requirements in Finland for training and development of tax credits.

Olympic Games



Moodle - British Safety Council, Olympic Games Project

Webanywhere has delivered a cloud-hosted, fully supported Moodle learning platform for the British Safety Council (Britsafe) to deliver Health & Safety training programs to around 125,000 contractors working on the London 2012 Olympic Games.

The Challenge

Britsafe is a leading global Health & Safety Charity offering a wide range of health, safety and environmental training and qualifications at all levels. Britsafe required a robust LMS (Learning Management System) solution to deliver online Health and Safety training to contractors working on site during the London 2012 Olympic Games.

Learners using the site need to securely access the video- and quiz-based training materials from various locations (both overseas and in the UK) and in five languages (including Spanish, Russian and Chinese). This presented significant challenges for providing the highest possible accessibility, availability and performance for diverse audiences with differing learning requirements.

The Moodle LMS solution

Because of the diverse audience needs, Moodle proved a versatile option for the client to use for its new 'Be Safe – London 2012' learning platform. Learners can watch a series of videos - created in partnership with a third party content development specialist - and answer a quiz specific to key areas of workplace Health & Safety best practice. Upon successful completion of the course, learners receive a certificate.



“We chose to partner with Webanywhere because of their *unique* ability to truly 'stretch beyond' to deliver a highly *complex* project within budget and very tight timescales.”
Matt Sharp, Interim Head of Online, British Safety Council



LinkedIn
webanywhere



Facebook
webanywhere-ltd



Twitter
@webanywhere



Phone
+1 312 5887284



Location
220 N Green St,
Chicago, IL
60607, USA



Email
info@webanywhere.com

